

Alcohol Free Surface Disinfectant Wipe

Date of revision: 31/10/24

Available in 200 or 160 wipe dispenser tubs and refill bags

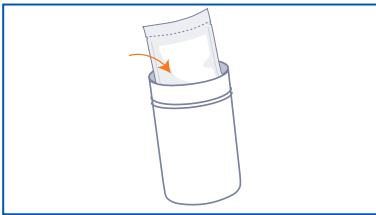
Intended Use / Intended Purpose:

MD

For the surface disinfection of medical devices, including but not limited to, dental chairs, examination lights and patient transport. Not intended for use on medical and dental instruments. Specially formulated for use in the medical and dental environment.

BPR

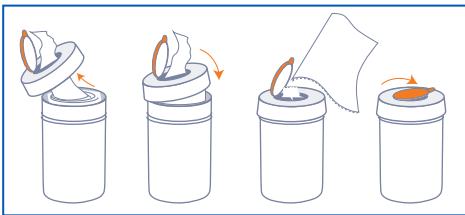
For the disinfection of surfaces. Use biocides safely and sustainably. This product should be used in accordance with the product label. PT2 Formulation type: AL.



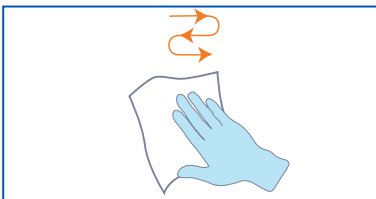
1. Place refill bag in dispenser tub,



2. Cut open air tight plastic pouch across the top of the pouch,



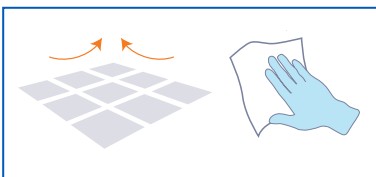
3. Feed the centre wipe through the hole in the cap and replace, Pull wipe at a 45° angle.



4. Using sufficient wipes for each application wipe the clean surfaces to be disinfected so that they are completely moistened



5. Let the disinfectant take action for 60 seconds.



6. Allow surface moisture to dry. Wipe with clean tissue if necessary. See product labels and MSDS for further information.

Indications / Efficacy (60 secs): Bactericidal. Yeastcidal. Virucidal activity against enveloped viruses: Vaccinia virus, Hepatitis B virus (HBV), Hepatitis C virus (HCV), Hepatitis Delta virus (HDV), Human Immunodeficiency Virus (HIV), Influenza virus, Coronavirus, Herpesviridae, Filoviridae (Ebola), Rubella, Rabies, Measles, Poxviridae.

Tested to Standards: EN16777, EN16615, EN14885, EN14476, EN13727, EN13624.

Composition: Contains Aqua, Alkyl (C12-16) dimethylbenzyl ammonium chloride (ADBAC/BKC (C12-16)) (68424-85-1) 0.48% w/w (4.8g/kg), Didecylidimethylammonium Chloride (7173-51-5) 0.22% w/w (2.2g/kg), Perfumes (contain Amyl cinnamal, Limonene, Alpha-Isomethyl ionone).

Handling and Storage. Ensure there is sufficient ventilation of the area. The wearing of protective gloves is recommended. P403+P233: Store in a well-ventilated place. Keep container tightly closed. P235: Keep cool.

Contraindications. Mild steel, aluminium, copper.

Disposal. Dispose of contents/container in accordance with local regulations. Do not discharge liquid into drains or rivers. Do not flush. Non maceratable.

Intended Users. For professional use only. The products are used within the dental surgery by the dentist or dental assistant as part of their general disinfecting routines.

Patient Population: Dental surgery patients, both adults and children.

Contains detergent. UK number for poison advice: 111. Poisons Information Ireland: For information or to report a poisoning incident contact The National Poisons Information Centre (01 8092166).

Any serious incident related to this medical device must be reported to the manufacturer and the competent authorities.

H412: Harmful to aquatic life with long lasting effects.
P273: Avoid release to the environment. P301+P310:
IF SWALLOWED: Immediately call a doctor.
P305+P351+P338: IF IN EYES: Rinse cautiously with water for several minutes. Remove contact lenses, if present and easy to do. Continue rinsing.



For additional languages see www.topdental.co.uk

EC REP

Authorisation holder: DIRECTA AB P.O. Box 723, Finvids väg 8 SE-194 27 Upplands Väsby, Sweden

MD

CE 1639

UK CA 0120



Manufactured in the UK by: Topdental (Products) Ltd. Unit 1, Holmfield Industrial Estate, Halifax, W. Yorks, HX2 9TN. UK Tel +44 (0)1535 652750 www.topdental.co.uk

UFI: 2520-0057-K00H-5Q24