

Instructions for use

Product description:

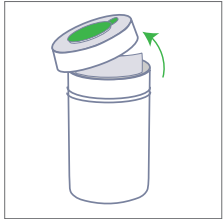
Alcohol Surface Disinfectant Wipe

Date of revision: 30/01/23 v1.6

topdental™
Bossklein®

For the surface disinfection of non-invasive medical devices. Specially formulated for use in the Medical and Dental environment.

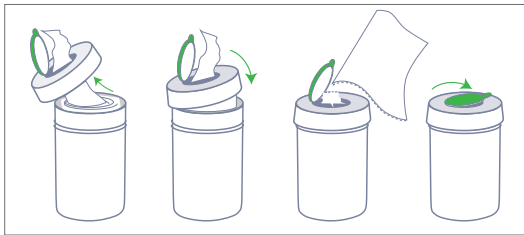
User Tub



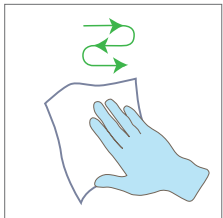
1. Remove cap of dispenser tub.



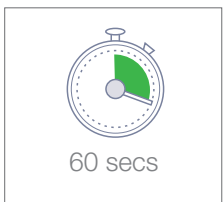
2. Cut open air tight plastic pouch across the top of the pouch.



3. Feed the centre wipe through the hole in the cap and replace. Pull wipe at a 45° angle.

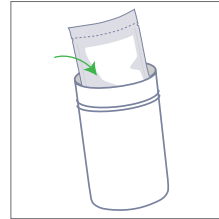


4. Using sufficient wipes for each application wipe the clean surfaces to be disinfected so that they are completely moistened.

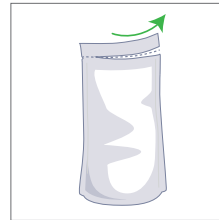


5. Let the disinfectant take action for 60 seconds. Allow surface moisture to evaporate. For professional use only. See product labels and MSDS for further information.

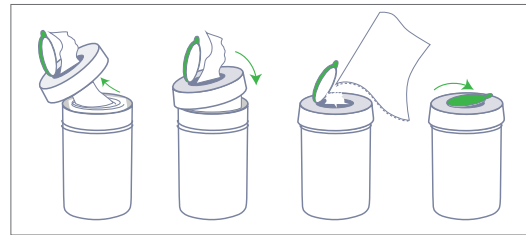
Refill Pouch



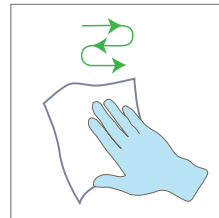
1. Place bag in dispenser tub.



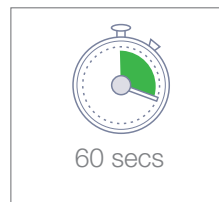
2. Cut open air tight plastic pouch across the top of the pouch.



3. Feed the centre wipe through the hole in the cap and replace. Pull wipe at a 45° angle.



4. Using sufficient wipes for each application wipe the clean surfaces to be disinfected so that they are completely moistened.



5. Let the disinfectant take action for 60 seconds. Allow surface moisture to evaporate. For professional use only. See product labels and MSDS for further information.

Efficacy (60 secs): Bactericidal including MRSA, VRE. Yeastocidal. Mycobactericidal. Tuberculocidal. Viruses to include: Non-enveloped viruses: Murine norovirus, Adenovirus 5. Enveloped viruses: Hepatitis B virus (HBV), Hepatitis C virus (HCV), Hepatitis Delta virus, Human Immunodeficiency Virus (HIV), Influenza virus, Coronavirus, Herpesviridae, Filoviridae (Ebola), Rubella, Rabies, Measles, Poxviridae.

Tested to Standards: EN 16615, EN 14885, EN 14476, EN 14348, EN 13727, EN 13624.

Composition: Ethanol (64-17-5) 63% w/w (630g/kg), Aqua, Perfumes.

Danger. H225: Highly flammable liquid and vapour. H319: Causes serious eye irritation. P303+P361+P353: IF ON SKIN (or hair): Take off immediately all contaminated clothing. Rinse skin with water. P305+P351+P338: IF IN EYES: Rinse cautiously with water for several minutes. Remove contact lenses, if present and easy to do. Continue rinsing. P370+P378: In case of fire: Use alcohol resistant foam or carbon dioxide to extinguish. **Storage.** P210: Keep away from heat, hot surfaces, sparks, open flames and other ignition sources. No smoking. P403+P233: Store in a well-ventilated place. Keep container tightly closed. P235: Keep cool. **Contraindications.** Incompatible materials: Copper, aluminium. Do not use on surfaces sensitive to alcohol. Alcohol is not recommended for use on dental/medical instruments. **Disposal.** Do not discharge liquid into drains or rivers. Do not flush. Non maceratable.

Intended Users. The products are used on surfaces within the dental surgery by the dentist or dental assistant as part of their general disinfecting routine in-between patient appointments. Patients are usually not present during use, but all patients that are seen in the surgery contribute to the need for the products.

Any serious incident related to this medical device must be reported to the manufacturer and the competent authorities.

Lemon aroma UFI:EE00-VOC9-F00M-WVDU Natural aroma UFI:NH00-D01P-S004-K6YW



For additional languages see www.topdental.co.uk



Danger

